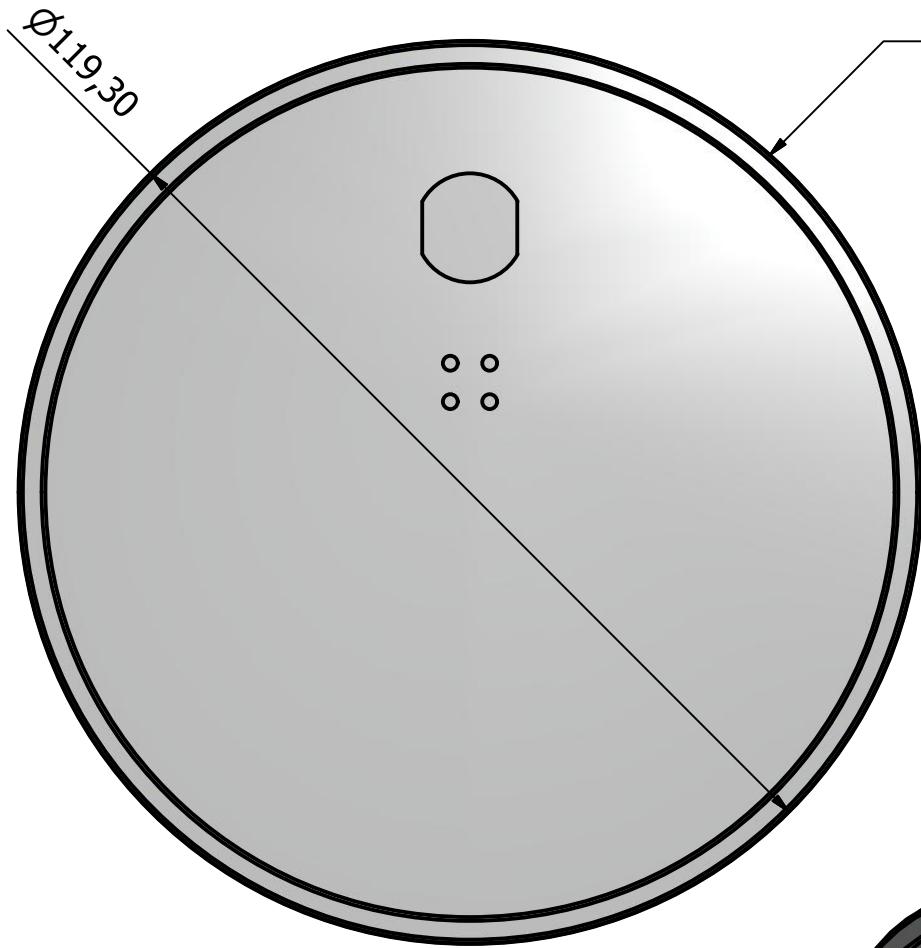


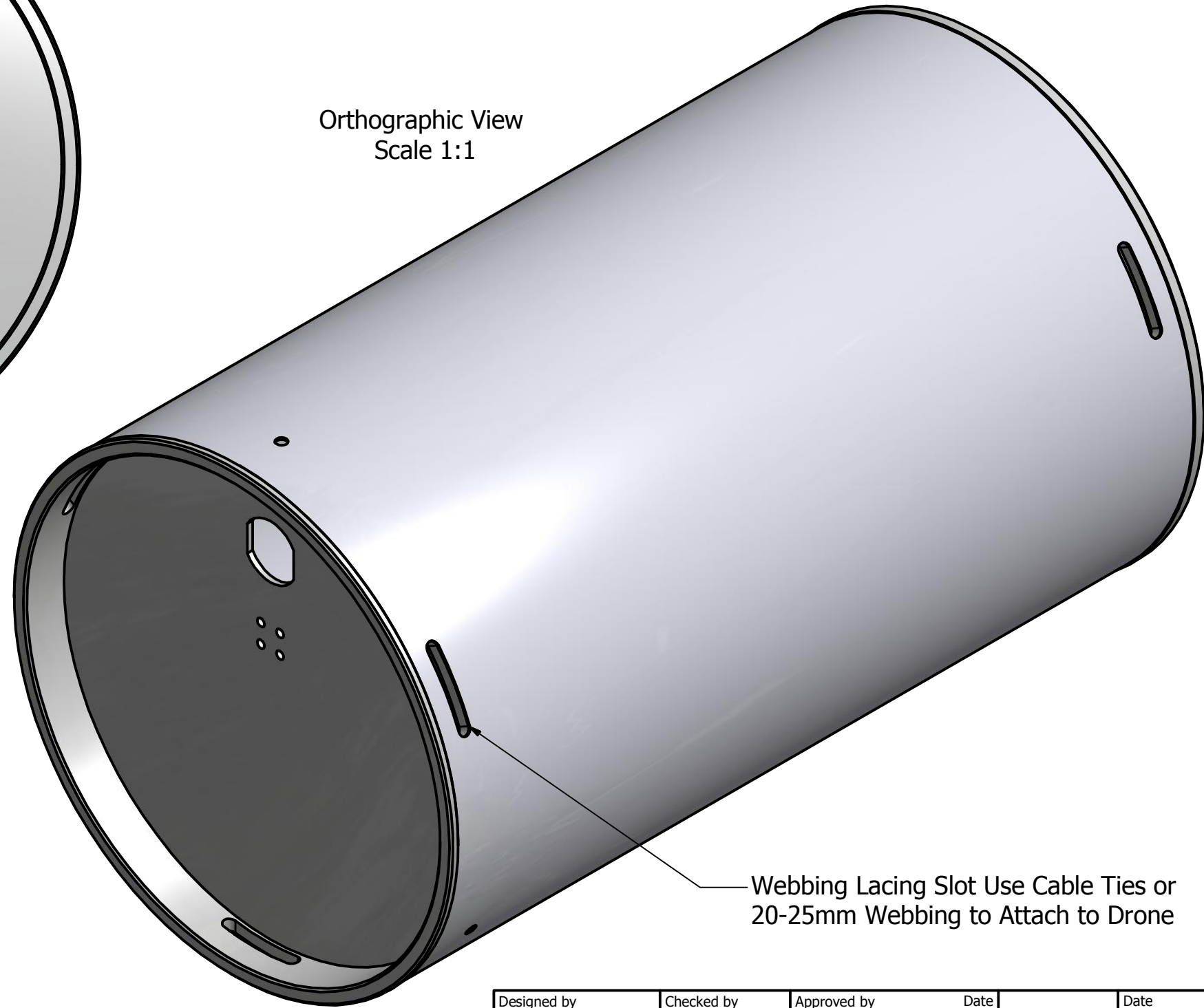
MS350.C.XXX.DDD



Front End View View  
Scale 1:1

Webbing Lacing Slot Use Cable Ties or  
15-20mm Webbing to Attach to Drone

Orthographic View  
Scale 1:1

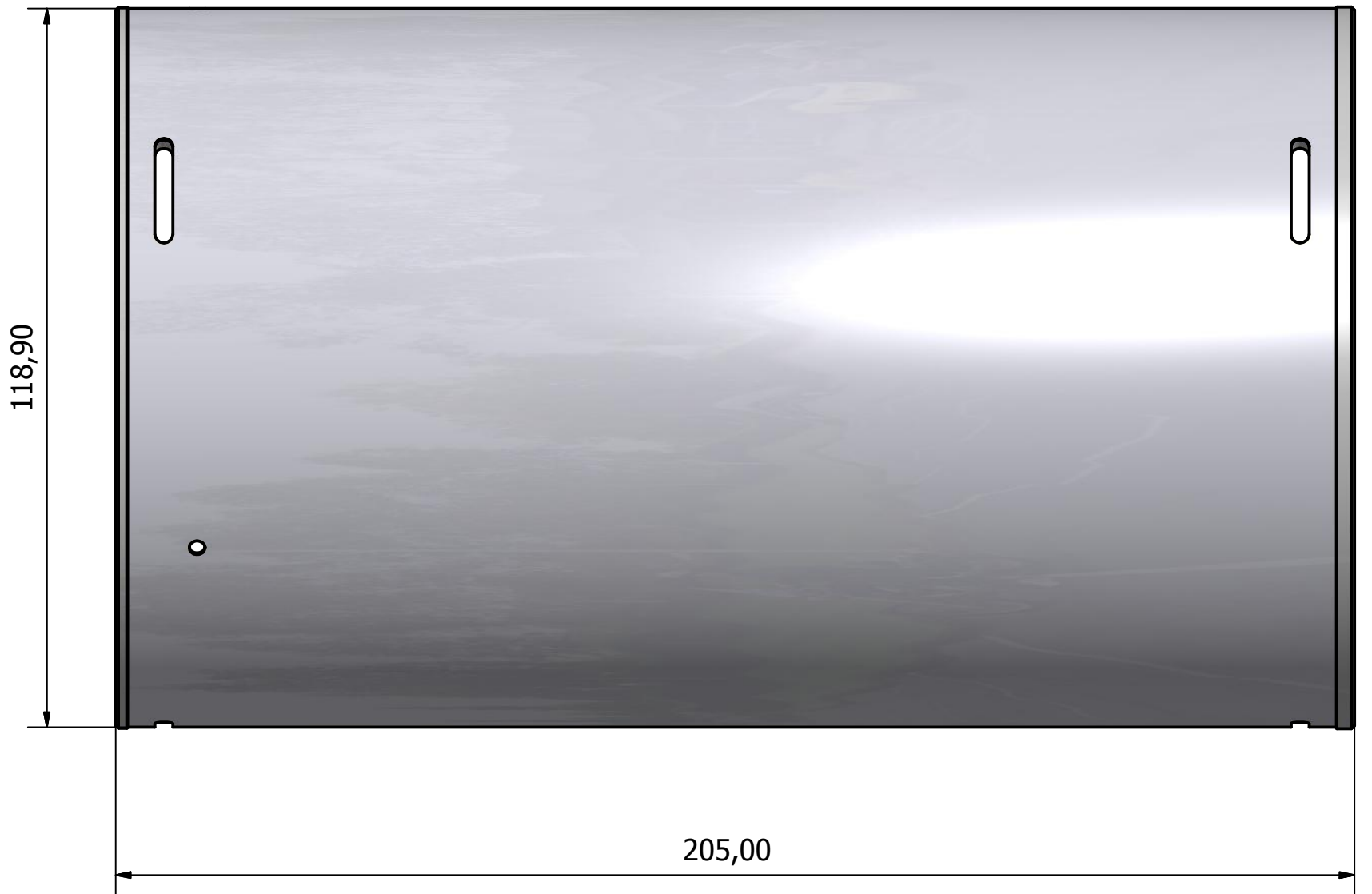
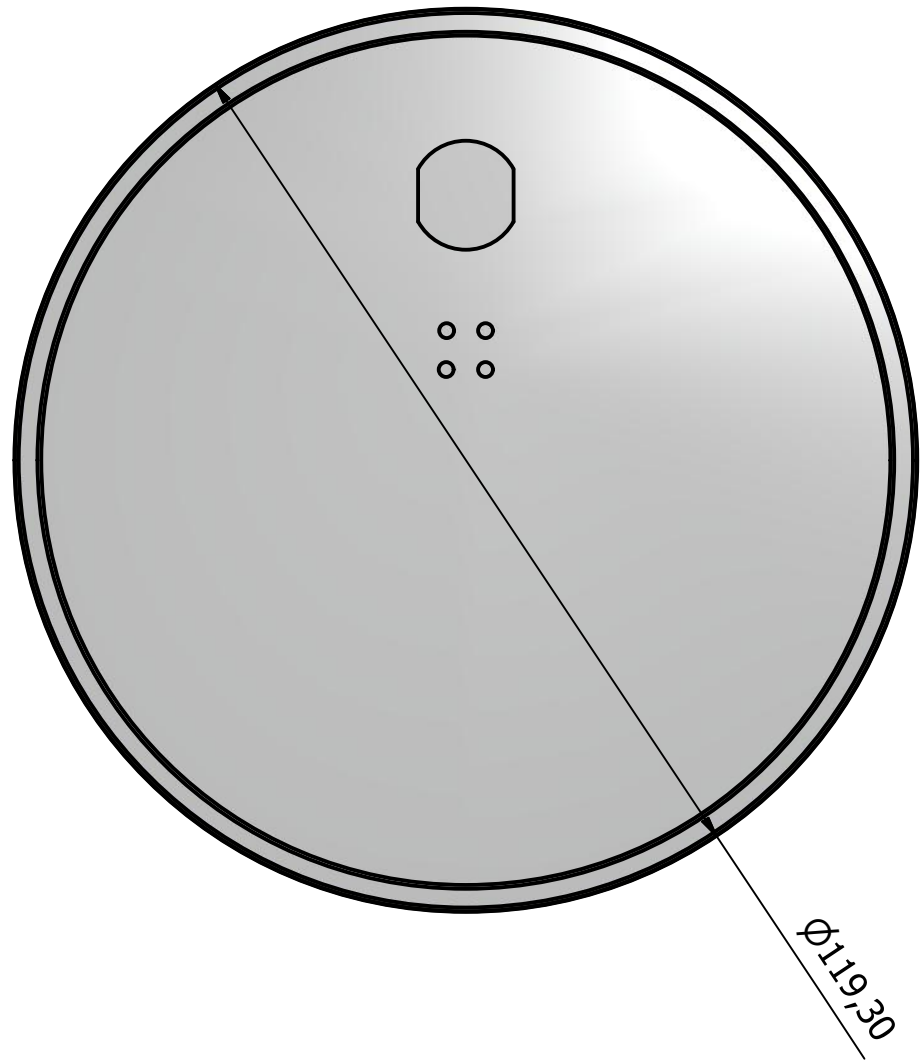


Webbing Lacing Slot Use Cable Ties or  
20-25mm Webbing to Attach to Drone

TABLE		
Column 1	Column 2	Column 3
XXX	CSI	Cesium Iodide (Na)
XXX	NAI	Sodium Iodide (TI)
DDD	UAS	Unmanned Aerial System
DDD	MTS	Manned Terra System
DDD	UTS	Unmanned Terra System

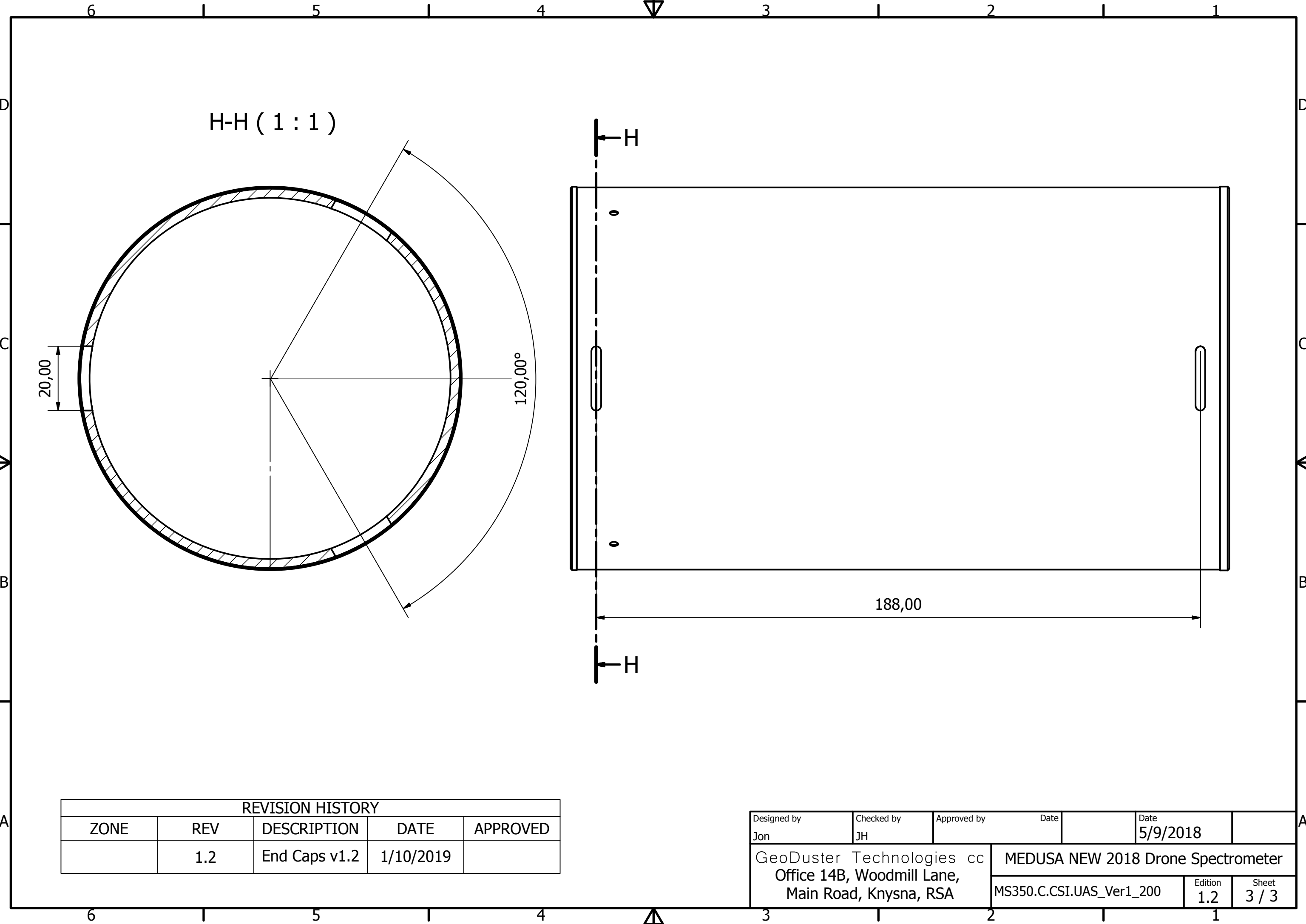
Designed by Jon	Checked by JH	Approved by	Date	Date 5/9/2018
GeoDuster Technologies cc Office 14B, Woodmill Lane, Main Road, Knysna, RSA		MEDUSA NEW 2018 Drone Spectrometer		
MS350.C.CSI.UAS_Ver1_200		Edition 1.2	Sheet 1 / 3	

SPC\_Xtal\_Assy\_MS350



All Views on Sheet Scaled 1:1

Designed by Jon	Checked by JH	Approved by	Date	Date 5/9/2018
GeoDuster Technologies cc Office 14B, Woodmill Lane, Main Road, Knysna, RSA		MEDUSA NEW 2018 Drone Spectrometer		
MS350.C.CSI.UAS_Ver1_200		Edition 1.2	Sheet 2 / 3	



H-H ( 1 : 1 )

20,00

120,00°

188,00

REVISION HISTORY				
ZONE	REV	DESCRIPTION	DATE	APPROVED
	1.2	End Caps v1.2	1/10/2019	

Designed by Jon	Checked by JH	Approved by	Date 5/9/2018	Date
GeoDuster Technologies cc Office 14B, Woodmill Lane, Main Road, Knysna, RSA		MEDUSA NEW 2018 Drone Spectrometer		
MS350.C.CSI.UAS_Ver1_200		Edition 1.2	Sheet 3 / 3	